

The New Jersey
Department of Children and
Families
**Division of Children's System
of Care**

and

Local System of Care

The New Jersey Department of Children and Families Division of Children's System of Care



- The Department of Children and Families has built one doorway for families to access services.

Contracted Systems Administrator (CSA)

PerformCare



- First Step for Accessing Services
- Referrals and Information
- Data Management

1-877-652-7624

Connecting to Local Mental Health Services



PerformCare
1-877-652-7624



*Child in
Crisis?*
Mobile
Response

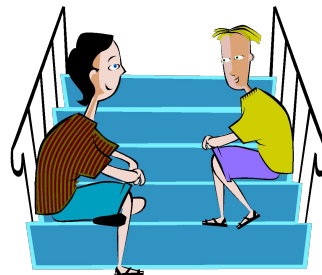


Referral to
Mental Health
Provider
Services



Case Management Services

Moderate



Intense



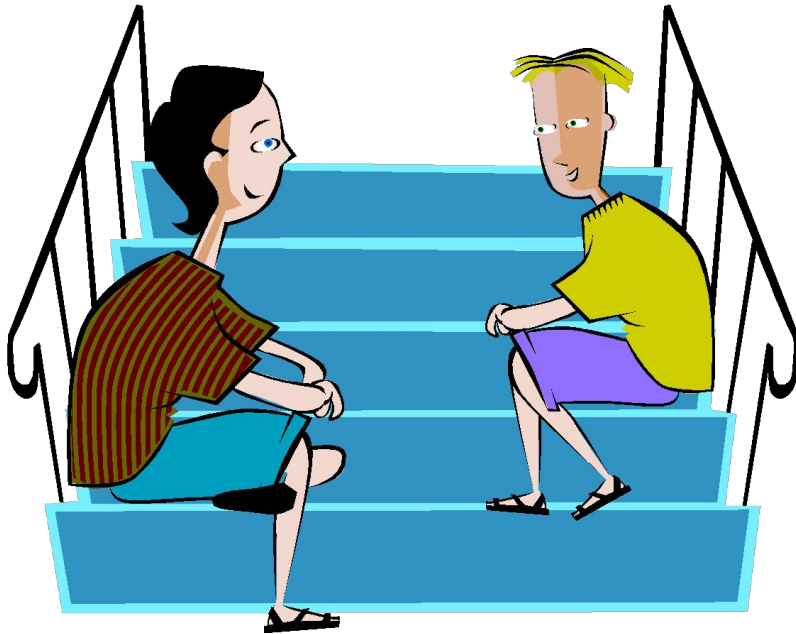
Family
Support
Organization



856-507-9400

Care Management Organization (CMO)

CGS Family Partnership, Inc.



- Face-to-face care management for moderate needs
- In-home services

1-877-652-7624

Care Management Organization (CMO)

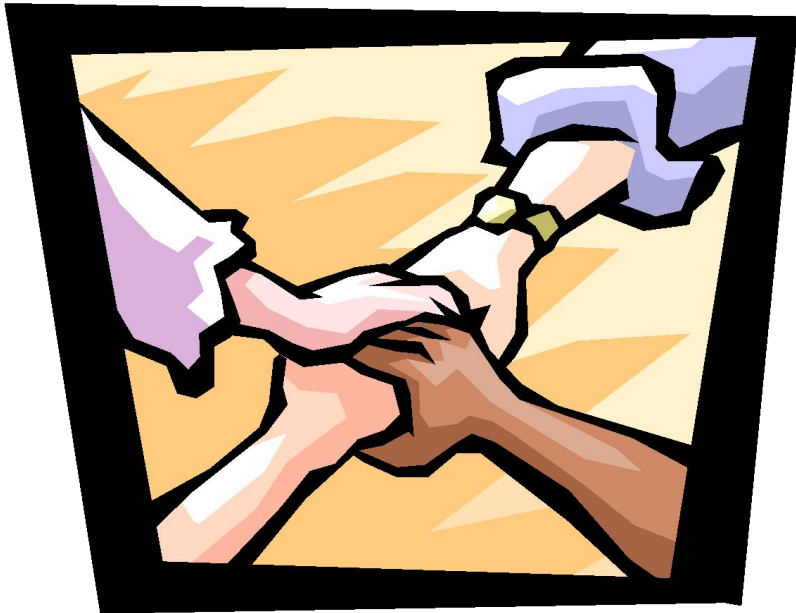
CGS Family Partnership, Inc.



- Intensive team-based Care Management
- In home services
- Community-Based

1-877-652-7624

Family Support Organization (FSO)



- Parent Partners
- Support Groups
- Warm Line
- Education
- Training

856-507-9400

Youth Partnership



- Youth Advocacy
- Voluntary Membership
- Educating the Community about mental health issues

Mobile Response and Stabilization

Acenda Integrated Health



- 24 / 7
Mobile Response for
Families in Crisis
- Trained intervention
workers
- Stabilization services

1-877-652-7624

Provider Services

Local Mental Health Providers



- Behavioral Assistance and In-Community Services
- Family Centered, Culturally Competent, Coordinated Services

Schools & Child-Study Teams



- Key members of Child-Family Teams
- Partners in Planning
- Systems Partners

Statewide Systems Management



**New Jersey Department of
Children and families –**

**Division of Children's System of
Care –**



**Contracted Systems
Administrator (CSA) –**

PerformCare

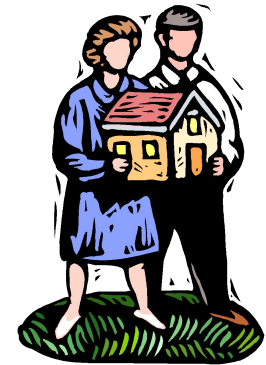
Local System Of Care



Family
Support
Organization



Mobile Response



Care Management
Organization



Youth
Partnership



Providers



Schools